



GÜÇENSER

Power Plant Service



GUCENSER Inc.

Has been one of the leading companies in supplying parts, labor, installation and aftermarket services for all brand names and / or direct manufacturing of electrical rotating machinery for the last 25 years. Being a solution partner to sector leaders GUCENSER have actively part-take the entire scopes of the job orders, localization certificates and eventually the delivery of 125 generators for renewable energy segments. Product are mainly for Hydro, Geomass , Geothermal and , steam turbine plants located in Turkey.

About Us

Güçenser Service, Consultancy and Engineering San. Tic. Co. Ltd. was founded by Cemal Binici for services power plants, in the beginning of 2016. Its principle services are; diagnosis, expertise, fault definition, repair and maintenance of steam, gas, hydro turbines and generators, additionally modernization, spare parts manufacturing and providing. He carries out all these activities with his well experienced own team and business partners

Our Values

Müşterilerimizin arz ve talepleri doğrultusunda, değerli ve alanında başarılı kadromuz ile etkin ve verimli servis vermek. İlaveten, projelerlerdeki sorumluluğumuz ile takım çalışmasına önem vererek 'iyi iş' kavramının farkındalığı esas almak.

Our Vision

Delivering Customer Satisfaction is about providing timely, responsive service with integrity, simplicity and a passion for excellence while meeting or exceeding the customer's expectations, being well known company with high quality and good reputation.

Our Mission

It is the policy of Güçenser Service Cosultancy and Engineering San.Tic. Co. Ltd. to provide services to the local and foreign market which meet or exceed the reasonable expectations of our customers. Satisfying our customers with the high level of quality is a primary goal and a fundamental element of our business mission by developing our team qualifications and equipments.

1) Maintenance, Repairs of Generators and Engineering Services

- a) Tests and Maintenance of Turbogenerators (L1, L2, L3, L4 level overhauls)
 - Periodical Tests (Condition Monitoring)
 - Static Tests
 - Dynamic Tests
 - Maintenance of Turbogenerators
 - Coil Manufacturing and Stator Rewinding
 - Rotor Rewinding (Reinsulation)
 - Manufacturing Retaining Rings and Replacement
 - High Speed Balance and Overspeed Test

- b) Tests and Maintenance of Hydrogenerators (L1, L2, L3, L4 level overhauls)
 - Periodical Tests (Condition Monitoring)
 - Static Tests
 - Dynamic Tests
 - Maintenance of Turbogenerators
 - Coil Manufacturing and Stator Rewinding
 - Rotor Rewinding (Reinsulation)

2) Maintenance, Repairs of Turbines and Engineering Services

- a) Repair and maintenance of Steam Turbines, Manufacturing of Spare Parts
- b) Repair and maintenance of Gas Turbines,
- c) Repair and maintenance of Hydro Turbines,

3) Erection of Generators and Turbines, Montage of Electromechanical Parts and Commissioning

- a) Storage the Delivered Parts at Suitable Area at Plant
- b) Carrying to Montage Area When Necessary
- c) Dimensional Check According to Drawings
- d) Installation, Tests and Adjustments
- e) Commissioning

4) Quality Control of Turbines and Generators at During Production Process

- a) Dimensional Check of the Manufactured Parts According to Drawings
- b) Inspection of Material Compositions
- c) Inspection of Material Certificates and Quality of Materials
- d) Check of Weldings
- e) Witness of Non-destructive Tests (NDT)
- f) Inspection of Manufacturing and Assembling Processes
- g) Witness of Factory Acceptance Tests (FAT)
- h) Check and Control Conformity of Production Quality to International Standards
- i) Preparation of Reports

5) Rehabilitation and Upgrading of Power Plants

6) Dismantling, Packing, Transportation, Erection and Commissioning of Second Hand Power Plants

Repair and Maintenance of Generators

Tests and maintenance of turbogenerators



Turbogenerator rotor rewinding



Retaining ring manufacturing and replacement



High Speed Balance and Overspeed Tests



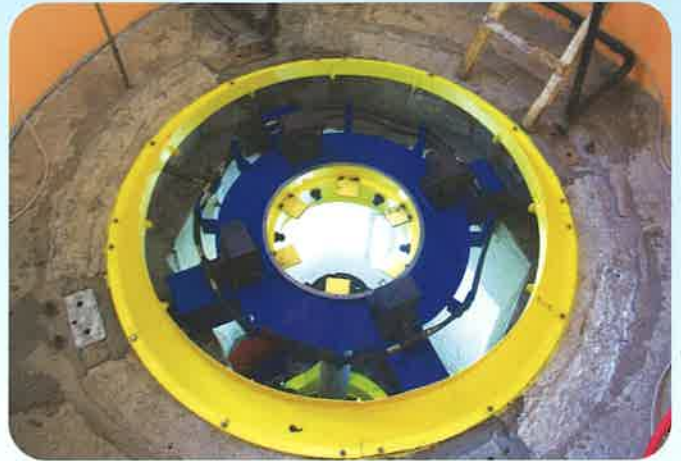
Stator Rewinding



Tests, Montage and Commissioning

Repair and Maintenance of Generators

Tests and maintenance of hydrogenerators



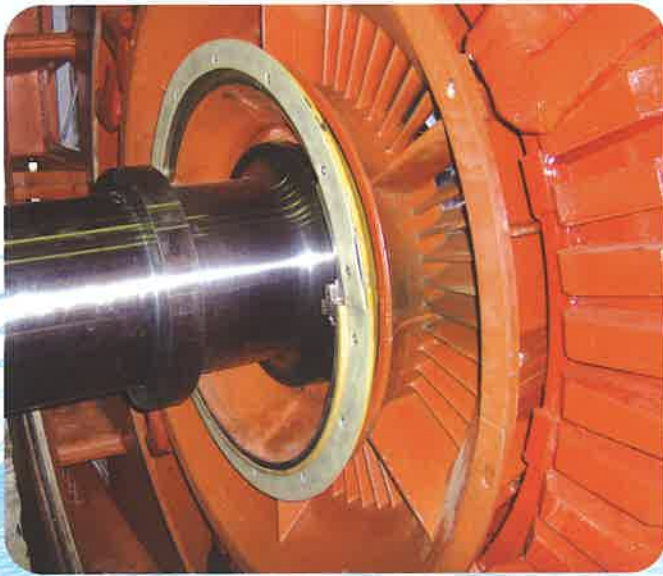
Dismantling, assembling , test and commissioning



Bearings maintenance, repair and remetalting of white metal



Maintenance, repair and tests of stators and rotors



Turbine Maintenance, Repair and Engineering Services

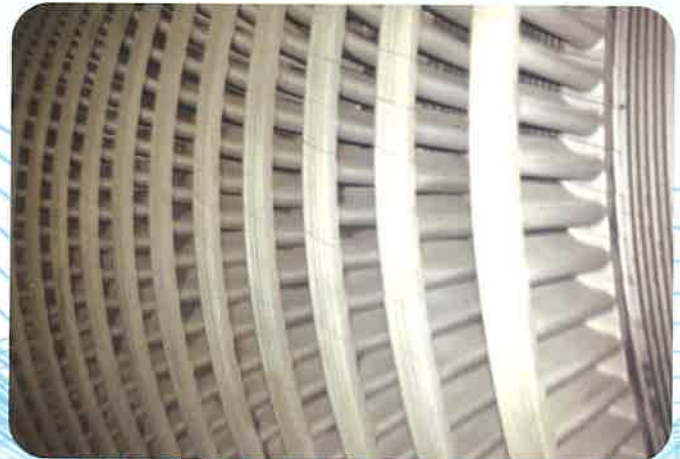
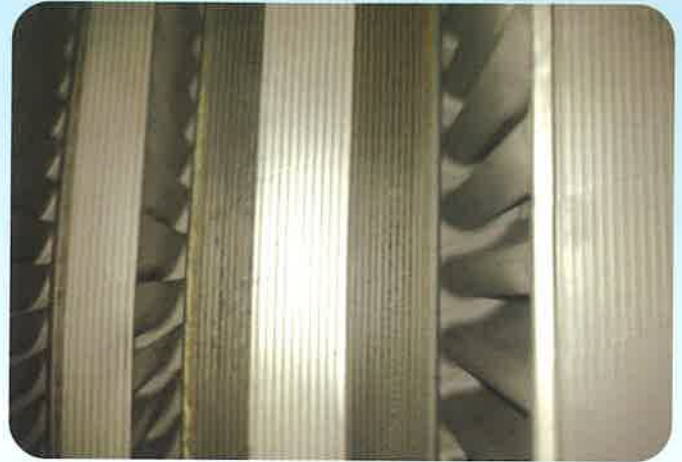
Maintenance and Repair of Steam Turbines, Spare Parts Manufacturing





Turbine Maintenance, Repair and Engineering Services

Maintenance and Repair of Steam Turbines, Spare Parts Manufacturing

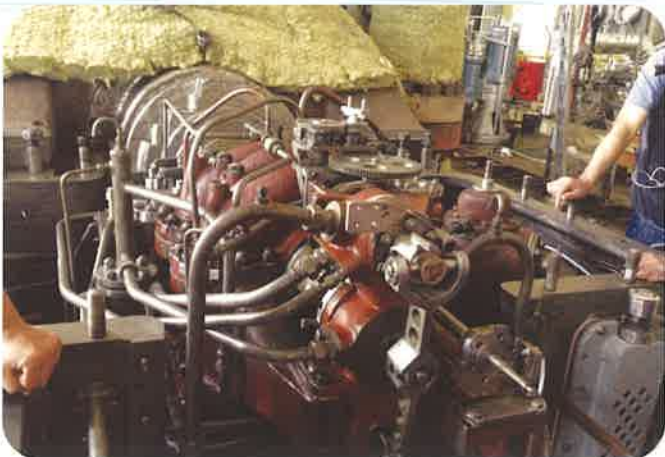




Maintenance and Rehabilitations on Site



Spare Parts Manufacturing (Blade, Nozzle, Labyrinth etc.)



Dismantling, Maintenance, Tests and Adjustments at Factory



De-blading, Blading, Repair, Tests, High Speed Balance and Overspeed Test at Factory

Turbine Maintenance, Repair and Engineering Services

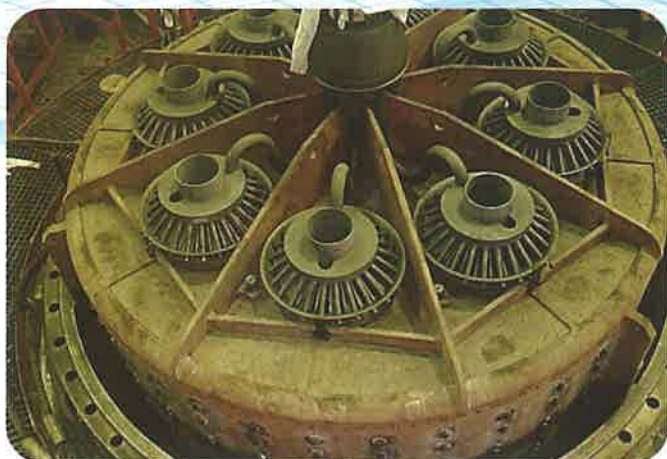
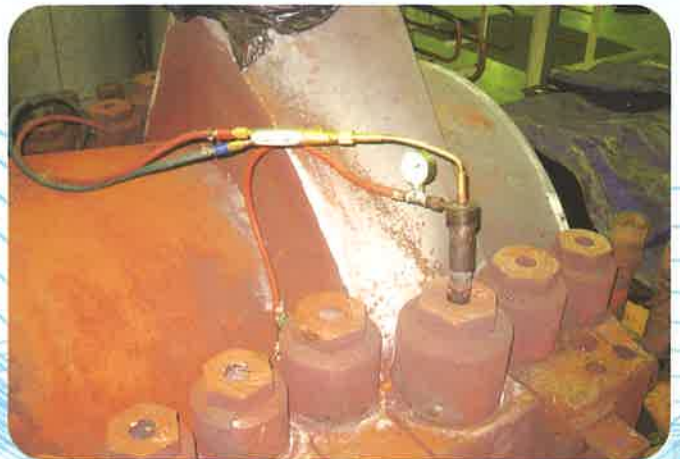
Repair and maintenance of gas turbines



Dismantling, assmbling and commissioning



Replacement of blades and other parts



Repair and maintenance





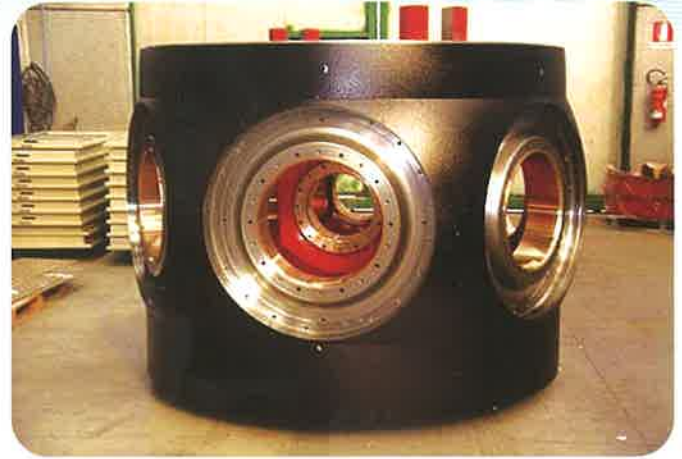
Maintenance and repairs of Francis Turbines



Maintenance and repairs of Pelton Turbines



Maintenance and repairs of Kaplan Turbines



Quality Control of Turbines and Generators at During Production Process



References;

- **Revision of Aliğa Combined Cycle Power Plant Generators**
- **Revision of Ambarlı Thermal Power Plant Gas Turbine**
- **Revision of Ambarlı Thermal Power Plant Generator**
- **Replacement the Retaining Rings of Ambarlı Thermal PP Generator Rotor**
- **Major Overhaul of Bosen Enerji PP Turbine and Generator**
- **Major Overhaul of Doğa Enerji PP Turbine and Generator**
- **Modification of Generator Rotor belonging to Sincar Enerji PP-Iraq**
- **Revision of Yatagan Thermal PP Generator**
- **Quality Control of Steam Turbine Belonging to ARC-Jordan, During Production in China**



New Products

ROTOR HUB



STATOR & ROTOR



40mW at the test bench

New Products



COIL PREPARATION



New Products



DC MOTOR SHAFT
AND FLANGE MANUFACTURING

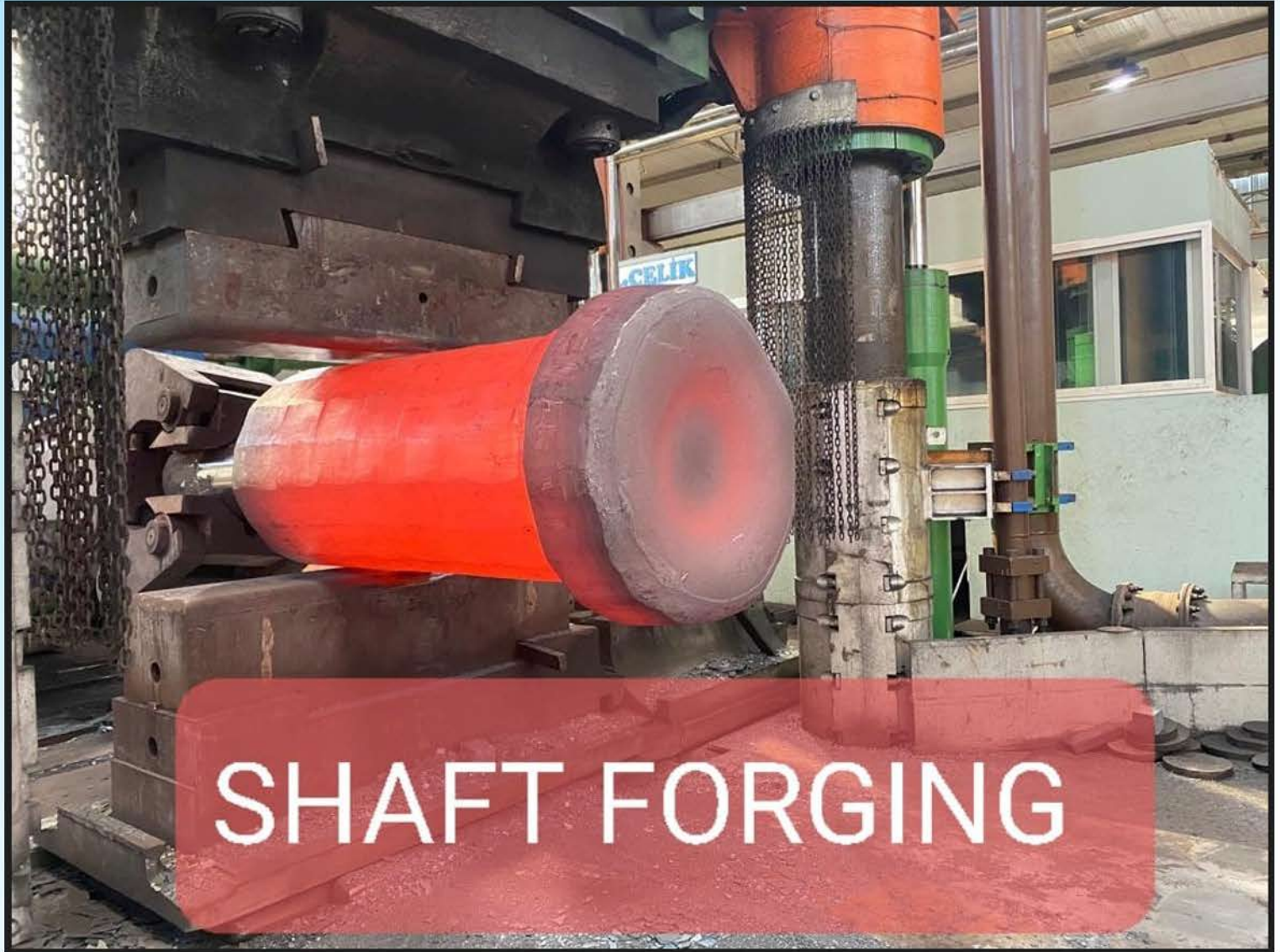


WELDING TESTS FOR THE
FLANGES ON THE SHAFT



ROTOR HOLDING CARRIAGE

New Products



New Products



New Products



New Products



New Products

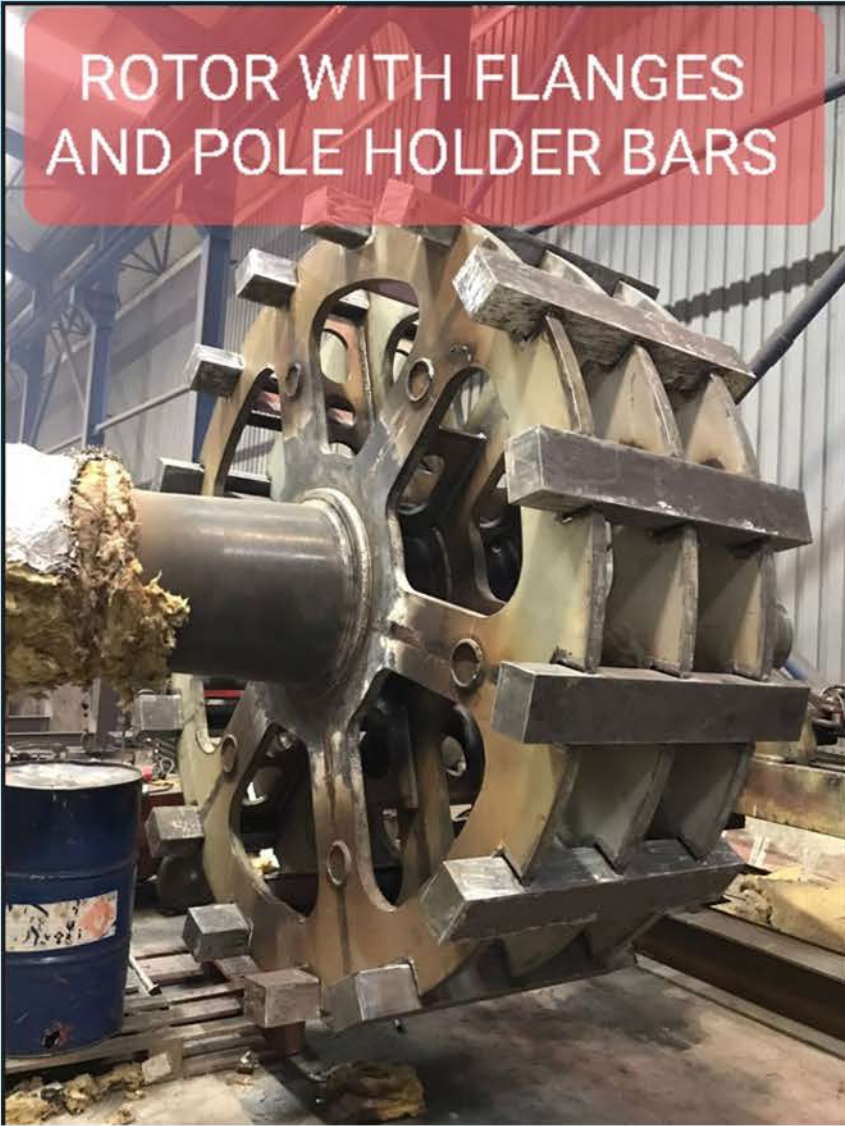


New Products



New Products

ROTOR WITH FLANGES
AND POLE HOLDER BARS



ROTOR
for the 9 MW DC MOTOR

AFTER SAND BLASTING
AND PRIMER COAT PAINTING
READY FOR MACHINING



ROTOR MACHINING



2800mm Dia Flange
machining

New Products



New Products



MACHINE LIST

1 PC - 25 TONS CRANE

CNC HORIZONTAL BOHRWERK MACHINE

X:14000 Y:4500 Z:1500 W:1500

5 Axis + turning table



CNC VERTICAL LATHE MACHINE

Ø : 4300 X 2000 – 30 TONS



GÜÇ-ENERJİ-SERVİS

CNC LATHE MACHINE

Ø:3000 X 5000 – 50 TONS



GÜÇ-ENERJİ-SERVIS

LATHE : \varnothing :1500 X 6000



LATHE : \varnothing :4000 X 8000



CYLINDER SHEET BENDING MACHINE

Max thikness : 20 mm – 3000 Ø



Welding Machine

5 pcs Lincoln Electric Idealarc DC-1000 NA-5S Submerged Arc Welding Machine

5 pcs Magmaweld Rs 350 M-5

GÜÇ-ENERJİ-SERVIS

ADRES: 4009-5 DOSB Dilovası-KOCAELİ-TURKEY

Tel: +90 532 648 30 81 E-Mail: info@gucenser.com.tr / www.gucenser.com.tr

*“Excellent Service Provides
Reliable Power”*



**GÜÇENSER
Power Plants Service**

**Mehmet Z. TURKI
Industrial Engineer General Manager**

Office: Premium Plaza A Block8/16513 Pendik, Istanbul
Factory: DOSB 4009 No:5 Gebze, Kocaeli

Phone: +90 216 482 0 700 – Mobile: +90 532 648 3081– Fax : +90 216 482 0 444
E-mail: info@gucenser.com.tr – Web : www.gucenser.com.tr